

Please check the examination details below before entering your candidate information

Candidate surname					Other names				
Centre Number					Candidate Number				
Pearson Edexcel Level 1/Level 2 GCSE (9–1)					<div> <div></div> <div></div> <div></div> <div></div> <div></div> </div> <div> <div></div> <div></div> <div></div> <div></div> <div></div> </div>				
Tuesday 4 June 2019									
Afternoon (Time: 1 hour 45 minutes (plus 1 minute to start CD for Section B))					Paper Reference 1MU0/03				
Music Component 3: Appraising									
You must have: Source Booklet (enclosed)								Total Marks	

Instructions

- Use **black** ink or ball-point pen.
- **Fill in the boxes** at the top of this page with your name, centre number and candidate number.
- Answer **all** questions.
- Answer the questions in the spaces provided
– *there may be more space than you need.*

Information

- The total mark for this paper is 80.
- Section A has 68 marks and Section B has 12 marks.
- The marks for **each** question are shown in brackets
– *use this as a guide as to how much time to spend on each question.*
- There are two CDs for the paper. One for Section A and one for Section B.

Advice

- Read each question carefully before you start to answer it.
- Try to answer every question.
- Check your answers if you have time at the end.

Turn over ►

R57903A

©2019 Pearson Education Ltd.

1/1/1/1/1/1/1/1/1/1/1/1/1/1/1/1



Pearson

DO NOT WRITE IN THIS AREA

DO NOT WRITE IN THIS AREA

DO NOT WRITE IN THIS AREA

(1)

- | Left hand | Right hand |
|-----------|------------|
| (2) | (2) |

- (1)

- (d) Identify **three** differences between the start of the extract and the start of the exposition. You should refer to rhythm, metre and tempo.

(3)

rhythm

metre

tempo

(Total for Question 1 = 9 marks)

J Williams: Main title/rebel blockade runner (from the soundtrack to Star Wars Episode IV: A New Hope)

2 Listen to the following extract which will be played **three** times.

(a) Name **one** percussion instrument heard at the **start** of the extract.

(1)

(b) Put a cross ☒ in the correct boxes to show whether each statement is true or false.

(3)

Statement	True	False
The melody starts with a leap of a perfect 5th	<input type="checkbox"/>	<input type="checkbox"/>
The melody is played in octaves	<input type="checkbox"/>	<input type="checkbox"/>
The melody has a dotted rhythm	<input type="checkbox"/>	<input type="checkbox"/>

(c) Identify the playing technique used by the harp at the **end** of the opening melody.

(1)

(d) Describe how the composer establishes an exciting and heroic atmosphere in this extract. You should refer to dynamics, harmony and rhythm.

(3)

dynamics

harmony

rhythm

(Total for Question 2 = 8 marks)

H Purcell: Music for a While

3 Listen to the following extract which will be played **three** times.

(a) Describe the instrumental melody at the **start** of the extract. (2)

(b) Name **one** instrument that plays the ground bass. (1)

(c) Identify the texture when the voice enters. (1)

(d) Name the cadence at the **end** of the extract. (1)

(e) Describe **three** features of the harmony that are characteristic of Baroque music. (3)

(Total for Question 3 = 8 marks)

Queen: Killer Queen (from the album 'Sheer Heart Attack')

4 Listen to the following extract which will be played **three** times.

(a) Identify the **two** sections played in the extract. Put a cross ☒ in the correct box. (1)

- ☐ **A** introduction and verse
- ☐ **B** verse and chorus
- ☐ **C** chorus and instrumental
- ☐ **D** chorus and coda

(b) Give **two** features of the vocal texture at the **start** of the extract. (2)

(c) Name **two** playing techniques used by the solo electric guitar in this extract.
Describe the sound produced by the playing technique. (4)

Playing technique 1	Description of sound produced by playing technique 1
Playing technique 2	Description of sound produced by playing technique 2

(d) Describe **two** ways the texture changes towards the **end** of the extract. (2)

(Total for Question 4 = 9 marks)

J S Bach: 3rd Movement from Brandenburg Concerto no.5 in D major

5 Listen to the following extract which will be played **three** times.

(a) Identify the tempo of the extract. Put a cross ☒ in the correct box.

(1)

- ☐ **A** andante
- ☐ **B** allegro
- ☐ **C** moderato
- ☐ **D** presto

(b) Name the first solo instrument heard.

(1)

(c) The first section of the extract is for three solo instruments. Describe the music played by the harpsichord.

(3)

(d) Name the harmonic device at the **end** of the extract.

(1)

(e) Describe **two** features of the texture that are characteristic of Baroque orchestral music.

(2)

(Total for Question 5 = 8 marks)


Esperanza Spalding: Samba Em Preludio (from the album 'Esperanza')


6 You will hear **two** extracts, A and B.


You will hear each of them **three** times in the following order: AB, AB, AB.


(a) Identify the rhythm of the opening vocal melody in extract A. Put a cross ☒ in the correct box.

(1)

☒ **A** 

☒ **B** 

☒ **C** 

☒ **D** 

(b) Name the accompanying instrument heard in extract A.

(1)

(c) Name the instrument heard in extract B but not in extract A.

(1)

(d) Identify **two** similarities between the **start** of extract A and the **start** of extract B.

(2)

(e) Explain how the **end** of extract B is different to the **end** of extract A.

(1)

(f) Identify **two** features used in extract B that are characteristic of Jazz.

(2)

(Total for Question 6 = 8 marks)

Musical dictation

- 7 Listen to the following melody which will be played **four** times.

Before the melody, you will hear the tonic chord followed by the pulse.

Complete the score below by writing in the missing:

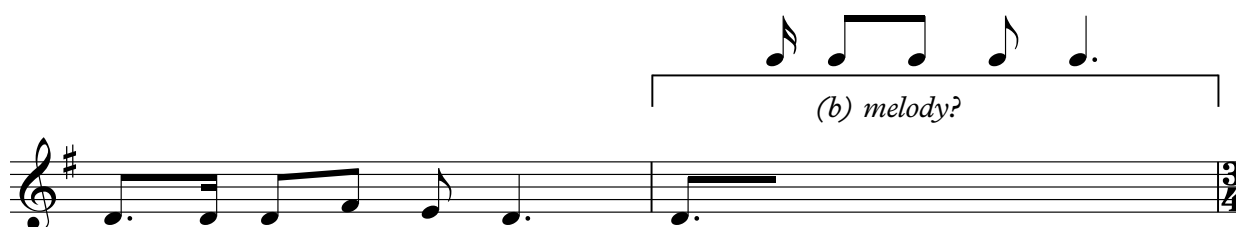
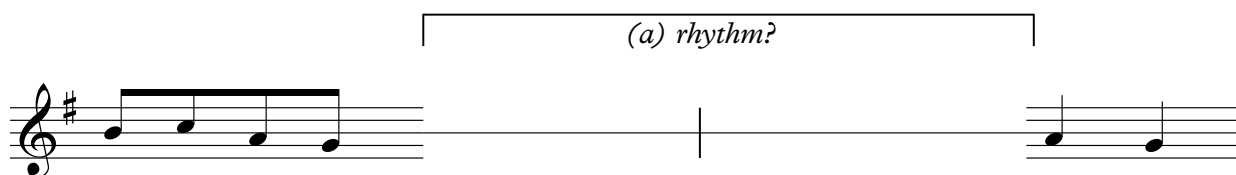
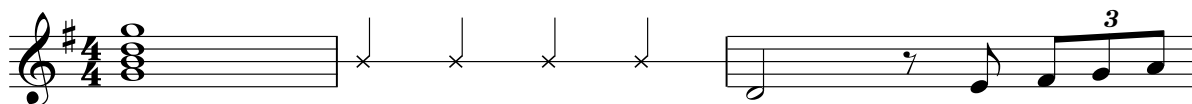
- (a) rhythm

(5)

- (b) melody

(5)

You may use the manuscript on page 17 for rough work. However you must write your final answer on the stave below.

Moderato

(Total for Question 7 = 10 marks)

Unfamiliar listening

8 Listen to the following extract which will be played **five** times.

A skeleton score is provided below.

1
Voice (a) *rhythm?*
Love quick - ly is pall'd tho' with la - bour 'tis gain'd;
Bass

6 (b) *melodic device?*
Wine nev - er does cloy, no, nev - er does cloy, tho' with

11 (c) *key and cadence?*
ease, with ease 'tis ob - tain'd.

15 (d) *melody?*
We sing we sing

20
while you sigh, we laugh, we laugh, we

27 (e) *texture and tonality?*
laugh, laugh while you weep;





DO NOT WRITE IN THIS AREA

DO NOT WRITE IN THIS AREA

DO NOT WRITE IN THIS AREA

- (a) The vocal melody in bar 1 to bar 3 is based on a repeated rhythmic pattern. Identify the rhythmic pattern. Put a cross ☒ in the correct box.

(1)

- ☐ **A** 
- ☐ **B** 
- ☐ **C** 
- ☐ **D** 

- (b) Name the melodic device in bar 6 beat 3 to bar 10 beat 1.

(1)

- (c) Identify the key and cadence at bar 12 beat 3 to bar 13 beat 1.

(2)

key	
cadence	

- (d) Describe **two** features of the melody of the lyrics 'sing, we sing'.

(2)

- (e) Describe the texture and tonality of bar 30 to the end of the extract.

(2)

texture

tonality

(Total for Question 8 = 8 marks)

TOTAL FOR SECTION A = 68 MARKS

SECTION B

Write your answer in the spaces provided.

You will hear extracts from Area of Study 4: Fusions; one familiar and one unfamiliar. In order to answer the question you should refer to the Source Booklet.

The familiar extract, Extract A: Afro Celt Sound System: Release (from the album 'Volume 2: Release')

The unfamiliar extract, Extract B: Panjabi MC: Mundian To Bach Ke (from the album 'The Album')

You will hear both extracts three times in the following order: familiar unfamiliar, familiar unfamiliar, familiar unfamiliar.

- 9 These two songs fuse musical features from popular music with musical features from different cultures.

Evaluate how effectively Afro Celt Sound System and Panjabi MC use **instrumentation** and **music technology** to create these two fusion songs.

The skeleton scores are provided in the Source Booklet.

You should use your knowledge of musical elements, contexts and language in your response.

(12)

DO NOT WRITE IN THIS AREA

DO NOT WRITE IN THIS AREA

DO NOT WRITE IN THIS AREA

DO NOT WRITE IN THIS AREA

DO NOT WRITE IN THIS AREA

DO NOT WRITE IN THIS AREA

DO NOT WRITE IN THIS AREA

DO NOT WRITE IN THIS AREA

DO NOT WRITE IN THIS AREA

DO NOT WRITE IN THIS AREA

DO NOT WRITE IN THIS AREA

DO NOT WRITE IN THIS AREA

DO NOT WRITE IN THIS AREA

DO NOT WRITE IN THIS AREA

DO NOT WRITE IN THIS AREA

(Total for Question 9 = 12 marks)

TOTAL FOR SECTION B = 12 MARKS
TOTAL FOR PAPER = 80 MARKS

DO NOT WRITE IN THIS AREA

You may use this manuscript paper for rough work for Question 7.

Manuscript paper with 10 sets of five horizontal lines for rough work.

DO NOT WRITE IN THIS AREA

DO NOT WRITE IN THIS AREA

DO NOT WRITE IN THIS AREA

BLANK PAGE

DO NOT WRITE IN THIS AREA

DO NOT WRITE IN THIS AREA

DO NOT WRITE IN THIS AREA

BLANK PAGE

DO NOT WRITE IN THIS AREA

DO NOT WRITE IN THIS AREA

DO NOT WRITE IN THIS AREA

BLANK PAGE

Every effort has been made to contact copyright holders to obtain their permission for the use of copyright material. Pearson Education Ltd. will, if notified, be happy to rectify any errors or omissions and include any such rectifications in future editions.